

Old Garden Roses in the Rockies



Baronne Prévost

Peggy Williams
ARS Master Rosarian

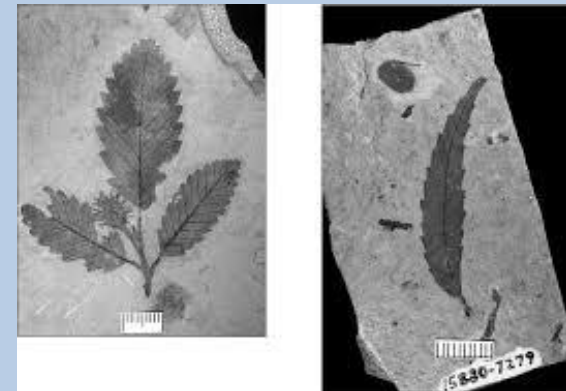
Old Garden Roses



'Zephirine Drouhin'

- Classes in existence before 1867 (1st hybrid tea 'La France')
- Clusters or individual blooms on each stem
- Medium to very tall growth habit
- Best bloom in spring, some repeat
- Most have strong fragrance & beautiful hips
- They belong in your garden

Florissant Fossil Beds National Monument



Empress Josephine ~ collector ~ saved many species from extinction



Old Garden Rose Classes

- **Alba**

- **Bourbon**

- **Centifolia**

- **Damask**



- **Moss**

- **Hybrid Perpetual**

- **Hybrid Gallica**

- **Portland**

Alba



- Grow in dense bushes 5-8 feet tall
- Slender, upright, shrubby
- Bloom clusters on green, thorny canes with graceful-grey-green foliage
- Tolerate some shade
- Grown for medicinal purposes in the Middle Ages
- Disease resistant and extremely hardy
- Delicate shades of pink or white in singles and doubles
- Once bloomers

‘Felicite Parmentier’

4 ft ,bushy, pale green foliage, many thorns, 1834



‘Konegin von Danemark’

4-5 ft, typical foliage, 1826



‘Alba Semi Plena’

5-6 ft, arching, large flowers, good hips



Bourbon



- 2- 10 feet, tall open, many repeat ,fragrant
- Foliage large and shiny
- Cupped blossoms
- Some nearly thornless
- Represent first step towards HT
- Colors range from deep reds through pinks to blush and white
- Some prone to blackspot

‘Reine Victoria’

3-4 ft, slender, excellent repeat, some blackspot, 1872



‘Zephirine Drouhin’

8-10 ft climber, pinkish bronzy foliage, nearly thornless
1868



‘Mme Isaac Pereire’

5-7 ft , thick green foliage, large flowers , 1880



‘Louise Odier’

4-5 ft, bushy, repeats well , opens cupped flattens out
1851



Centifolias

- Largely Dutch bred
- Lax, open , lanky growth
- Leaves large rounded, broadly toothed
- Flowers heavy, globular (Cabbage Rose)
- Rich fragrance
- Tendency to sport
- Red, pink or white flowers, large thorns, once bloomers

- **Dutch /Flemish Masters painted this type most frequently**



Jan van Huysum
Rijksmuseum,
Amsterdam
Still Life with Flowers
1723

'Fantin Latour'

4-5 ft, broad and bushy, unknown date

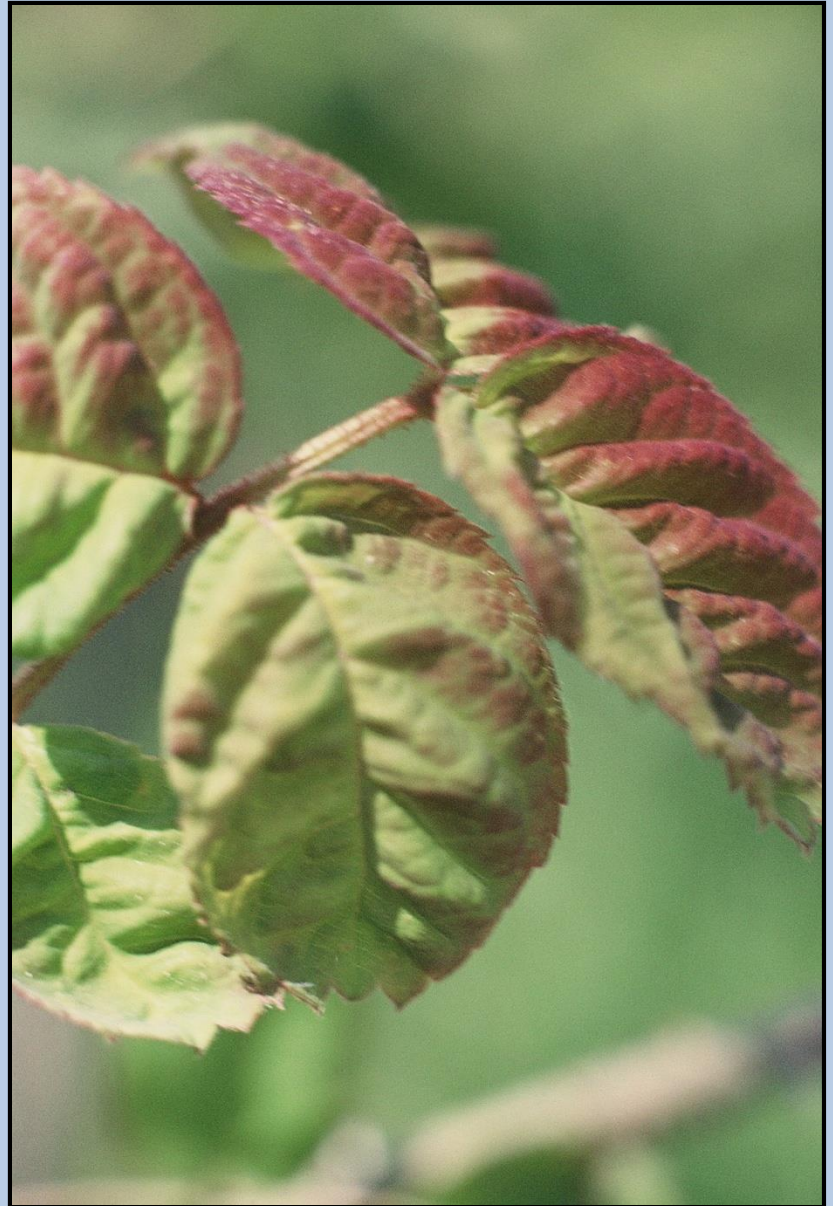


‘Bullata’

3-4 ft, crinkled leaves,
doesn't always open well



Insert photo by www.classicroses.co.uk



Rose de Meaux

3 – 3.5 ft, miniature, bushy twiggy, small foliage
flowers 1 inch across



Damask



- Dates to ancient times
- Average 5 ft, arching lax growth
- Large thorns
- Leaves elongated and pointed, grey green fuzzy underneath and on top, close to blossom
- Some repeat bloom
- Most very fragrant, Kazanlik used for rose oil

Hebe's Lip

3-4 ft, small foliage, thorny, 1912



‘Madame Hardy’

4-5 ft, likes to be fertilized, pale green foliage
green button eye 1832



‘Celsiana’

4-5 ft, graceful grey-green foliage, petals have appearance of crumpled silk, before 1750



Moss

- Name from tiny, hair like glands covering the sepals and peduncles resembling moss
- This growth is sticky and gives off resinous odor like balsam fir
- Most have large, globular flowers with petals that curve toward the center
- Colors range from shades of pink, dark crimsons, to purples
- Heights range from 4 feet to 10 feet with support, canes have strong thorns
- Quite hardy, some bloom once, a few repeat



‘Rene d’Anjou’

3-4ft, bushy, foliage tinted with bronze 1853



'General Kleber'

3-4 ft, bushy, light green foliage, 1856



Hybrid Perpetual

- Taller plants, range from 4 to 10 feet
- Diverse background
- Heavy feeders
- Tall, lanky (prune to ½) narrow upright
- Last major group before the hybrid tea class was developed
- Most bloom heavily in June with some flowering in fall; others repeat reliably
- Colors range from white to deep maroon, no yellow

‘Sidonie’

3 - 4 ft, bushy, long narrow leaves, good repeat 1846



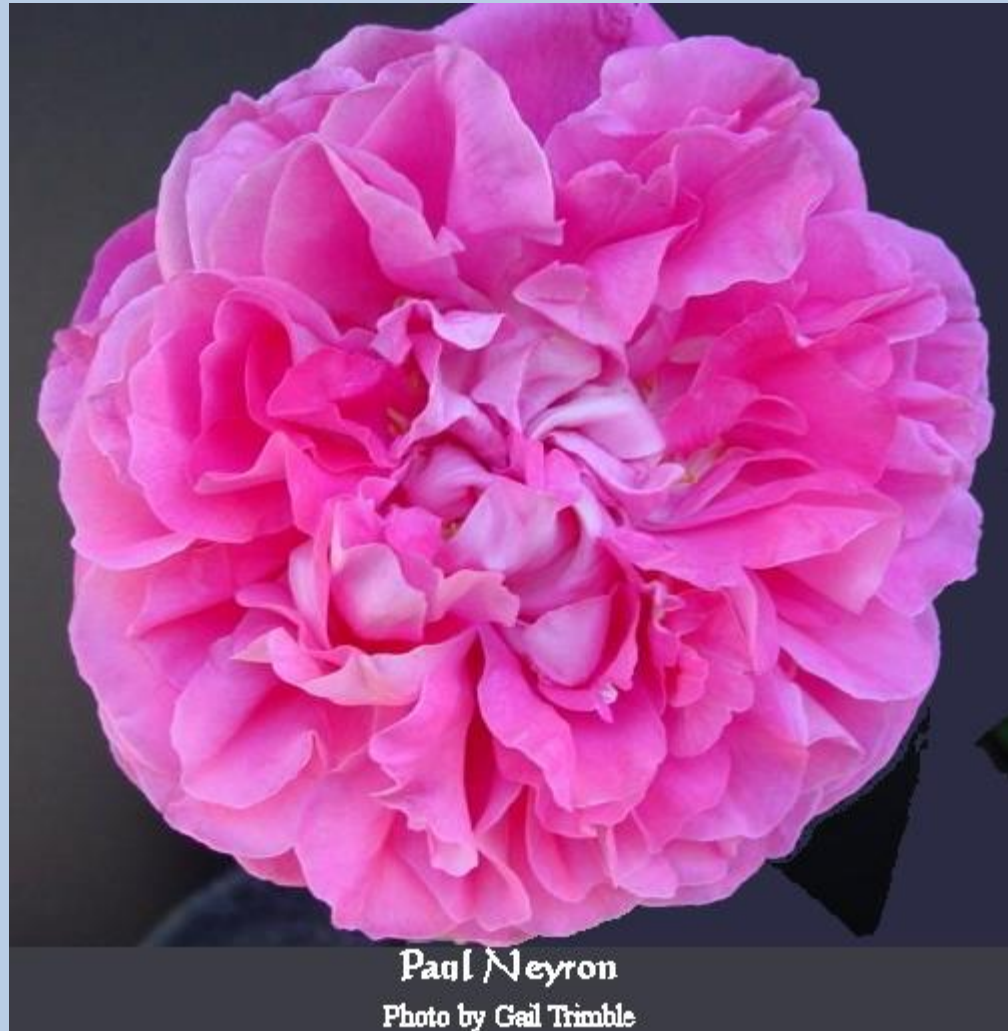
‘Marchesa Boccella’

3-4ft upright 1842



‘Paul Neyron’

5-6 ft, upright, large leaves and very large flower, 1869



Hybrid Gallica

- Oldest class in Old Garden Roses “Mad”
- Grow in bushes from 2-5 feet, upright, sucker
- Numerous small bristly thorns
- Leaves, oval, pointed at the tip
- All shades of red, from pale pink to purplish maroon and some reddish with white stripes or spots once blooming
- Fragrance varies from strong and rich in some to none in others

‘Charles de Mills’

4 ft, large very flat bloom, bush can be floppy, 1840



Alain Blanchard

4 ft, thorny, pale green foliage, 1839



Rosa Mundi

4 ft, bushy, dark green foliage, prior to 1600



Portland

- Strong Damask influence
- Average 4 feet, upright
- Many repeat
- Flowers tend to have very little stem
- Fragrant



‘Compte de Chambord’

4 ft, upright, ample foliage up to flower, 1860



‘Rose de Rescht’

3-4 ft, bushy, rough textured deep green foliage, blooms on short stems





Thank you !