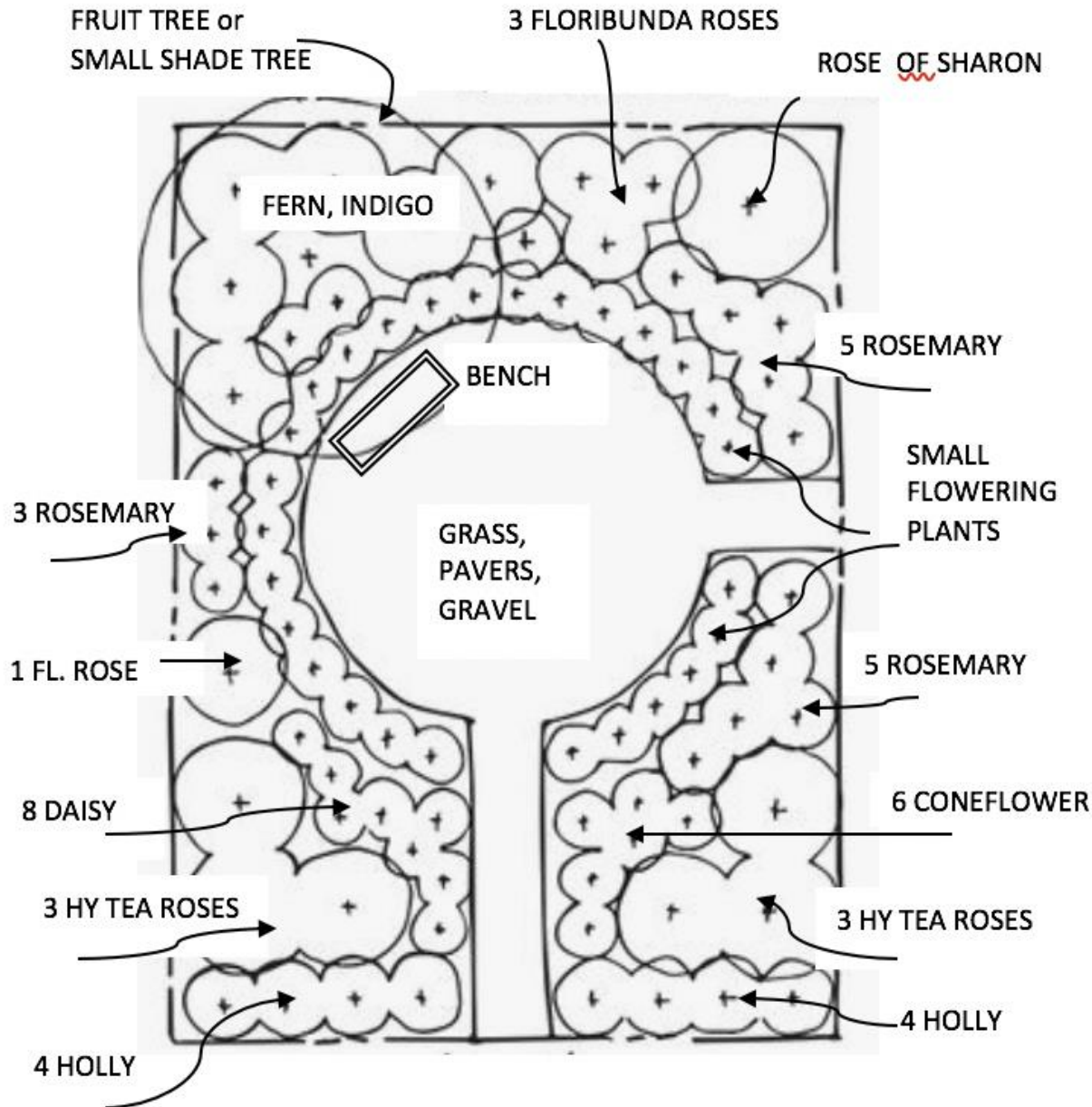


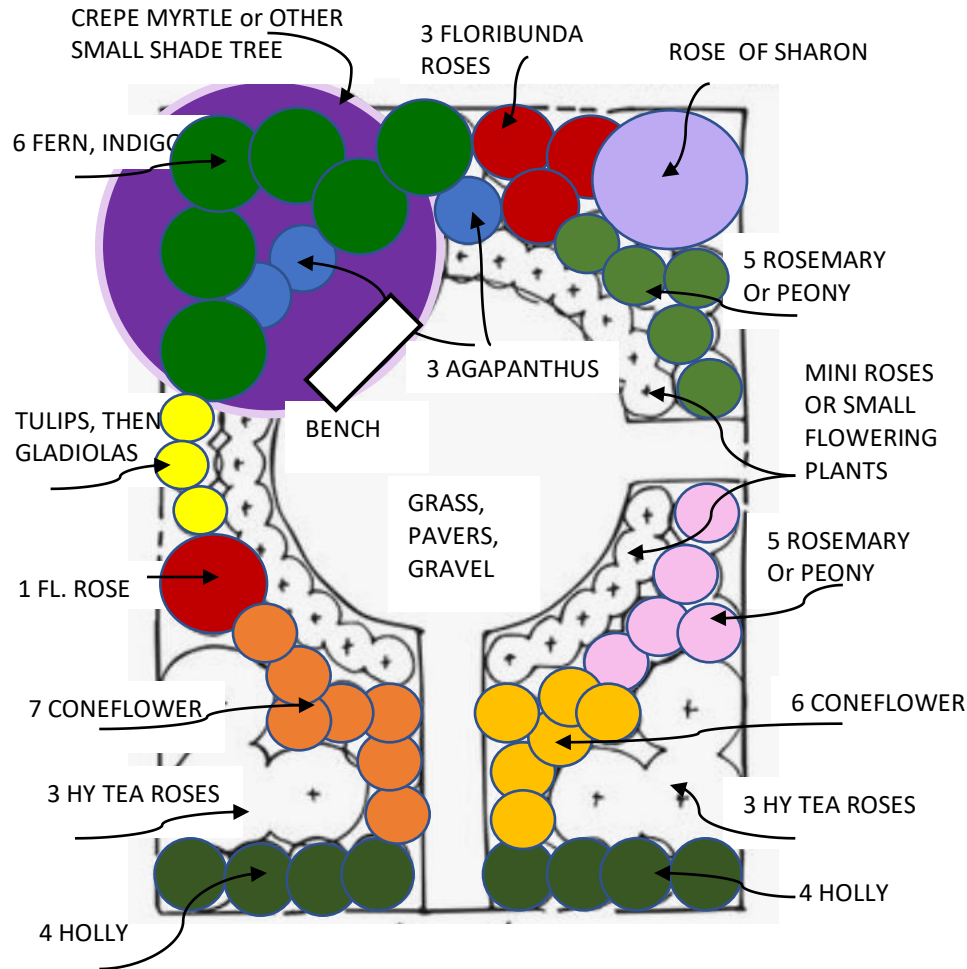
GETTING STARTED

EASY GARDEN DESIGN for 'NEVER FORGET GARDEN'



-
- 1 Tree in top left corner
 - 1 Rose of Sharon top right
 - 3+3 White Hy Tea Roses-bottom left, right
 - 3 Red Floribunda Roses-top
 - 1 Red Floribunda Rose- left center
 - 5+5 Rosemary
 - 4+4 Holly – 'Pencil' or columnar, bottom
 - False Indigo (blue) under the tree, or Fern under the tree, or mix
 - 6 Coneflower (echinacea)
 - Small plants around circle might be lavender, forget-me-nots, viola, statice, carnations, to provide a mix of colors.
 - Be sure to add the American Flag and the 'Never Forget' garden marker.

GETTING STARTED: GARDEN DESIGN IDEA – IN COLOR - for your ‘NEVER FORGET GARDEN’



- 1 Crape Myrtle in top left; zones 7-10; 15'T; white, pink, purple, red
- 1 Rose of Sharon top right; zones 5-9; 4-8'T; white, blue, purple, pink
- 3+3 White Hy Tea Roses-bottom left, right
- 3 Red Floribunda Roses-top
- 1 Red Floribunda Rose- left center
- Most roses do well in zones 4-10; 3-5'T
- 3 Agapanthus; zones 7-11; 4'T; blue, white
- 5+5 Rosemary; zones 8-10 or; 3-5'T; green, tiny blue flowers
- 5+5 Peony; zones 3-8; 3'T; white, yellow, pink, red
- 4+4 Holly – ‘Sky Pencil’; 6-8'T, 2'w; or columnar; zones 5-9;
- 6 False Indigo under the tree; zones 4-8; 3-4'T; or
- 6 Hardy Fern under the tree, zones 3-9; 2-3;T; or both
- 6 Coneflower (echinacea); zones 3-9; 2-4'T
- Miniature roses, or small flowering plants around circle might be lavender, forget-me-nots, viola, statice, carnations etc.
- Be sure to add the American Flag and the ‘Never Forget’ garden marker to your garden.



‘Never Forget Garden’ can be any size or shape, any corner of your existing garden, or an all new garden. Red, white and blue colors express patriotism. Yellow and orange add cheerfulness and will make your garden “pop”. Plants in this drawing are suggested based on size and color. The choice is yours.